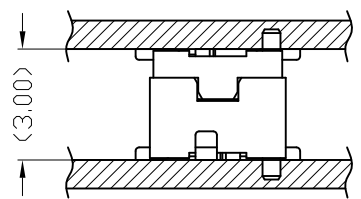
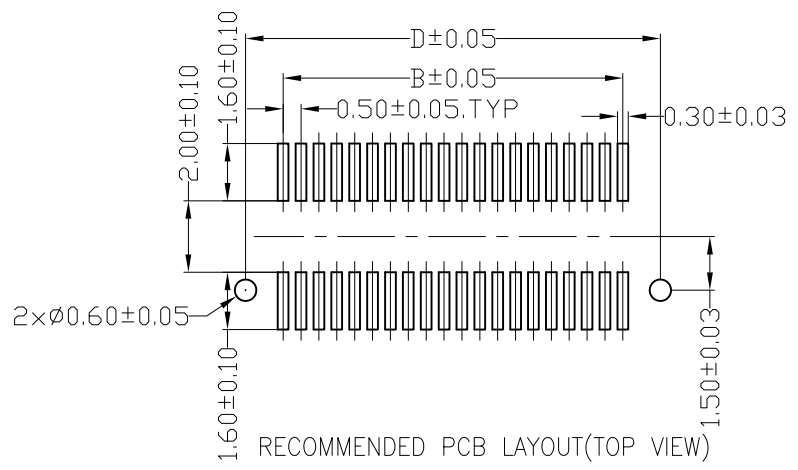
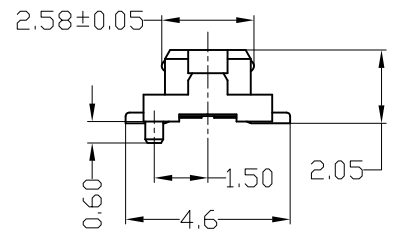
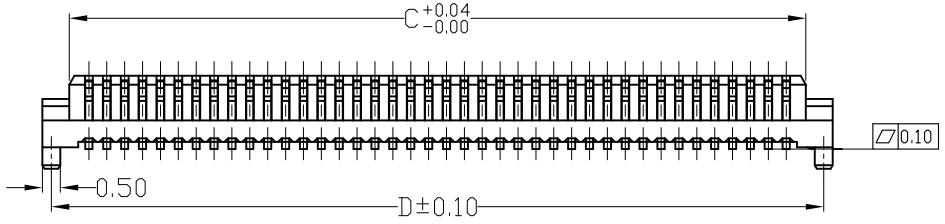
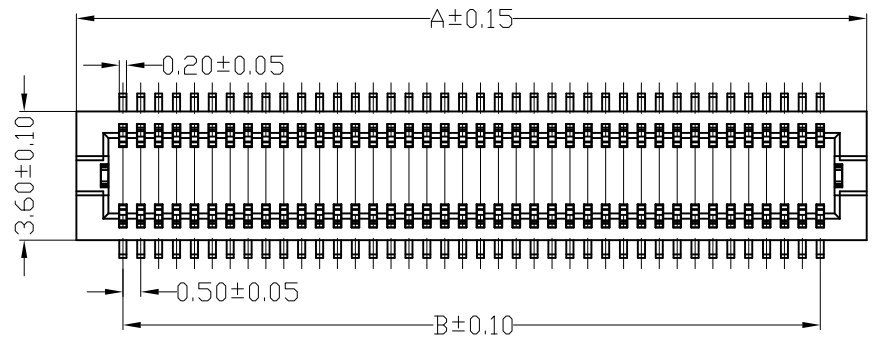


The product using material and processing must conform to the "WI-PZ-001"HSF technical standard control requirements

RoHS+HF

NOTE:
 1.MATERIAL SPECIFICATION:
 1-1.HOUSING: LCP,UL94V-0
 1-2.CONTACTS: PHOSPHOR BRONZE
 2.PLATING SPECIFICATION:
 2-1.CONTACTS:
 FLASH GOLD OVERALL NICKEL UNDR PLATED
 3.MECHANICAL PERFORMANCE:
 3-1.RETENTIVITY FORCE: 0.3kgf min
 3-2.DURABILITY: 30 CYCLES.
 4.ELECTRICAL PERFORMANCE:
 4-1.CURRENT RATING: 0.3A
 RATED VOLTAGE : 50V AC/DC
 4-2.CONTACT RESISTANCE: 50 mΩ MAX
 4-3.INSULATION RESISTANCE: 500MΩ Min
 4-4.DIELECTRIC WITHSTANDING : 150V
 5.ENVIRONMENTAL PERFORMANCE:
 5-1.OPERATING TEMPERATURE: -40°C~+85°C.
 6.PACKAGE SPEC: REEL
 7.P/N: B0503 21 M 0-2 XX 2 X X 1 01
 SERIES NO:
 HEIGHT:
 21-2.05H
 MALE FEMALE:
 M-MALE
 ANGLE:
 0-180°
 ROW NO:
 2-DOUBLE ROW
 PIN Q'PY:
 10~80pin
 NO SOLDER TABS
 COLOR:
 A-BLACK
 K-WHITE
 S-NATURE
 PLATING:
 A-ALL AU G/F
 C-BRIGHE TIN
 D-MATTE Tin
 TERMIPOINT:
 2-SMT



| | A | B | C | D |
|--------|-------|-------|-------|-------|
| 10 PIN | 4.60 | 2.00 | 3.10 | 4.10 |
| 12 PIN | 5.10 | 2.50 | 3.60 | 4.60 |
| 14 PIN | 5.60 | 3.00 | 4.10 | 5.10 |
| 20 PIN | 7.10 | 4.50 | 5.60 | 6.60 |
| 22 PIN | 7.60 | 5.00 | 6.10 | 7.10 |
| 24 PIN | 8.10 | 5.50 | 6.60 | 7.60 |
| 30 PIN | 9.60 | 7.00 | 8.10 | 9.10 |
| 32 PIN | 10.10 | 7.50 | 8.60 | 9.60 |
| 36 PIN | 11.10 | 8.50 | 9.60 | 10.60 |
| 40 PIN | 12.10 | 9.50 | 10.60 | 11.60 |
| 50 PIN | 14.60 | 12.00 | 13.10 | 14.10 |
| 60 PIN | 17.10 | 14.50 | 15.60 | 16.60 |
| 70 PIN | 19.60 | 17.00 | 18.10 | 19.10 |
| 80 PIN | 22.10 | 19.50 | 20.60 | 21.60 |

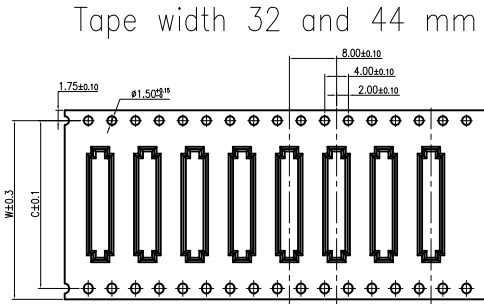
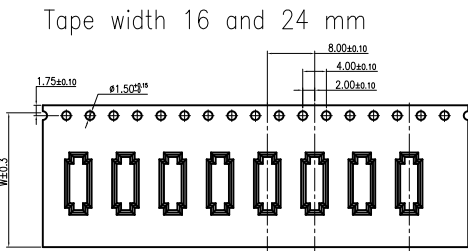
| REV. | REVISION RECORD | DATE | GENERAL TOLERANCES | | SCALE: | NAME | DATE | PART.NO: | DWG.NO: |
|------|-----------------|----------|--------------------|----------|----------|-------------|----------|---------------------------------------|--|
| AO | NEW RELEASE | 21.10.12 | LINEAR | ANGLES | 1:1 | Wang_jr | 21.10.12 | B050321M0-2XX2XX101 | ENDE05 |
| | | | 0.0±0.35 | X'REF±6° | APPROVED | Han_Gao | 21.10.12 | TITLE: |  WanLian Teconology Co., Ltd REV: A0 SHEET: 1/2 |
| | | | 0.00±0.25 | X'±3° | DESIGNER | Zijun_Huang | 21.10.12 | Board to Board Pitch0.5mm DF12 H2.1mm | |
| | | | 0.000±0.10 | X'X' ±2° | DRAWN | | | 双禧立路特松公司 | |

The product using material and processing must conform to the "WI-PZ-001"HSF technical standard control requirements

RoHS+HF

NOTE:

- 1.10 Sprocket hole pitch cumulative tolerance ± 0.20 .
2. Carrier camber is within 1mm in 100mm.
3. Material: black conductive polystyrene alloy.
4. Material Thickness: 0.3 ± 0.05 mm.
5. All dimensions meet EIA-481-B requirements.
6. 1000pcs Pef Reel.
7. For tape width(dim W)16 and 24mm pilot holes are provided on one sides.
For tape width(dim W)32, 44 and 56mm pilot holes are provided on both sides.



PULL OUT DIRECTION

PULL OUT DIRECTION

COVER TAPE
(上盖带)

PULL OUT DIRECTION

165°~180°
(PEELING ANGLE)

CARRIER TAPE
(下载带)

REEL
(胶盘)

GP LABEL
(环保标签)
(1PCS)

φ13.5

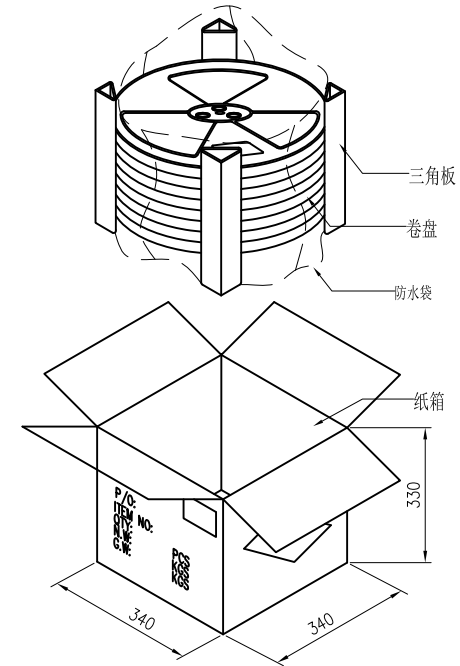
LABLE
(标签)

φ330

SAFE TAPE
(安全带L=1750mm Ref)

SCALE 1:4

W+4



| PIN NO. | W | C | PCS /REEL | REEL/CARTON | SUM(PCS) |
|-------------|----|------|-----------|-------------|----------|
| 10PIN~20PIN | 16 | - | 2500 | 15 | 37500 |
| 30PIN~50PIN | 24 | - | 2500 | 10 | 25000 |
| 60Pin~80PIN | 32 | 28.4 | 2500 | 8 | 20000 |

| REV. | REVISION RECORD | DATE | GENERAL TOLERANCES | | SCALE: | NAME | DATE | PART.NO: | DWG.NO: |  WanLian Teconology Co., Ltd | |
|------|-----------------|----------|--------------------|------------|----------|-------------|----------|--|---------|--|------------|
| AO | NEW RELEASE | 21.10.12 | LINEAR | ANGLES | 1:1 | Wang_jr | 21.10.12 | B050321M0-2XX2XX101 B050321F0-2XX2XX101 | ENDE05 | | |
| | | | 0.0±0.35 | X'REF±6° | | Han_Gao | 21.10.12 | TITLE: | | REV: A0 | SHEET: 2/2 |
| | | | UNIT:mm | X'±3° | | Zijun_Huang | 21.10.12 | III. 0公母座共用包装图 | | | |
| | | | SIZE: A4 | 0.000±0.10 | X'X' ±2° | | | | | | |